

   
check » shift » accelerate » park

Markets

TRUCK



BUS



CONSTRUCTION



AGRICULTURE



MILITARY



Products

PARK BRAKE SYSTEMS



MECHANICAL CONTROL CABLES



FLUID LEVEL INDICATORS



ELECTRONIC THROTTLE CONTROL SYSTEMS



SHIFT CONTROL SYSTEMS



Orscheln Products LLC
 1177 N. Morley
 P.O. Box 280
 Moberly, MO 65270
 USA
 Phone: +1 660-263-4377
 Fax: +1 660-269-3910
 Email: sales@orscheln.com
 www.orschelnproducts.com

Orscheln Europe
 1 Pelham Road
 Rugby, England CV23 0PB
 UK
 Phone: +44 (0) 1788 651400
 Fax: +44 (0) 1788 567555
 Email: sales@orschelneurope.co.uk
 www.orschelneurope.co.uk

Orscheln Products Trading (Shanghai) Co. Ltd./
 欧曲岚贸易(上海)有限公司
 501, 5/F. Block 10
 KIC Plaza
 290 Songhu Road, Yang Pu Area
 Shanghai
 China
 Phone: +86 21 5228 3110
 Fax: +86 21 5228 3115
 www.orschelnproducts.com

Orscheln Remsons Technologies PVT Ltd.
 A 2/3 Somnath Industrial Estate
 Somnath, Daman 396210
 India
 Phone: +011 260 2244019
 Fax: +011 260 2244020
 www.orschelnremsons.com

Specifications subject to change without notice.

Fluid Level Indicators



ORSCHELN®



ISO 9001 : 2000

FLICAT0709

Delivering Global Solutions for Fluid Level Indicators



Custom End Fittings—
Plastic-to-Metal Combination



Formed Metal Tubing



Customer-specific
blade & markings



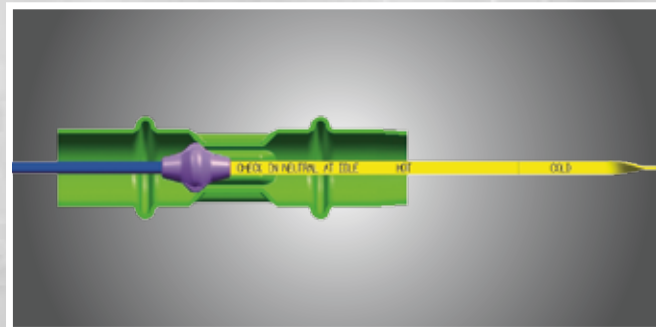
"Plug-n-Seal" Customer Design Option



The Twist2Lock™ Fluid Level Indicator design accommodates check, check/fill, or fill-only applications for medium and heavy-duty engines and transmissions. The unit is manufactured as a complete system and can be customized to meet the customer's requirements.

- Fully calibrated system, not just parts
- Repeatable accuracy available in checking engines and transmissions
- Design eliminates oil leakage "blow-by" at cap and at engine block
- Locking cap eliminates loose or lost sticks caused by vibration
- Color options available
- One-stop shop for all your FLI needs
- Tier one solution source for the world's top engine and chassis builders
- In-house design, engineering, DVP&R
- Over one million units in the field and growing
- More than dipsticks, FLIs are a system

Self-Gauging Feature



Optional Orscheln Products patented self-gauging feature ensures consistent and accurate fluid level readings for large tubes and complex tube routings.

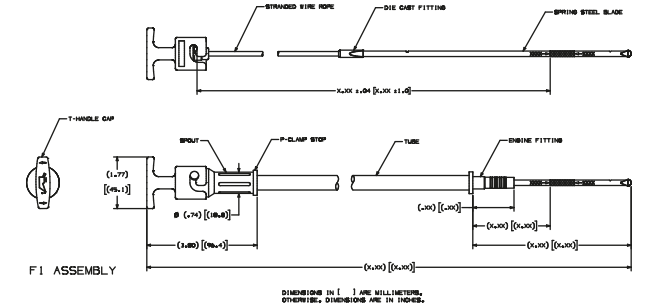
US Patent 7134220, EU Patents Pending.



F1 Series

Application:..... Engine Oil Check
Tube Materials:..... Polymer or Metal
(Based on temperature in routing)
Tube Sizes:..... 1/2" O.D.
Handle Options:..... "T" Handle

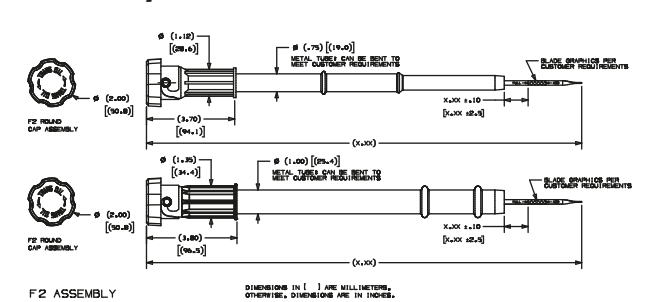
Typical Assembly



F2 Series

Application:..... Engine Oil & Transmission Fluid Check/Fill
Tube Materials: Polymer or Metal
(Based on temperature in routing)
Tube Sizes: 1/2", 3/4", 1" O.D.
Handle Options: "T" Handle or Round Cap

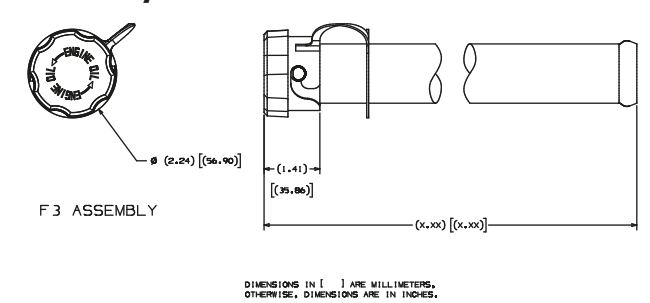
Typical Assembly



F3 Series

Application: Engine Oil Check/Fill
Tube Materials: Metal
Tube Sizes: 1-1/2" O.D.
Handle Options: Round Cap

Typical Assembly



F4 Series

Application:..... Engine Oil Fill
Tube Materials: Metal
Tube Sizes:..... 1-5/8" O.D.
Handle Options:..... Round Cap

Typical Assembly

